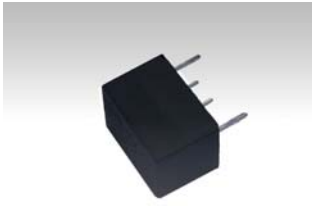


CERAMIC FILTER FOR COMMUNICATION
通讯设备用陶瓷滤波器

4+1 PIN Version 11.0x8.0x7.0 mm

- Bandwidths from $\pm 2.0\text{KHz} \sim \pm 15.0\text{KHz}@6\text{dB}$
- High selectivity
- Resin molded package for easy PCB mounting
- Operating temperature range: -20 to $+80^\circ\text{C}$
- Storage temperature range: -40 to $+85^\circ\text{C}$

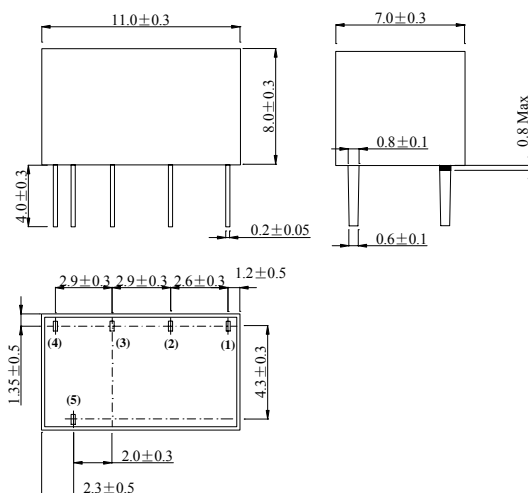


RoHS compliant

★ PARAMETERS
技术参数

Model	Centre Frequency Fc (KHz)	6dB Band Width (KHz) min	50dB Band Width (KHz) max	Stop Band Attenuation Fc \pm 100KHz (dB) min	Pass Band Ripple (dB) max	Insertion Loss (dB) max	Input/Output Impedance (Ω)	Operating Temperature Range
LT450BW	450.0	± 15.0	± 30.0	40	3.0	4.0	1500	$-20 \sim +80^\circ\text{C}$
LT450CW	450.0	± 12.5	± 24.0	40	3.0	4.0	1500	$-20 \sim +80^\circ\text{C}$
LT450DW	450.0	± 10.0	± 20.0	40	3.0	4.0	1500	$-20 \sim +80^\circ\text{C}$
LT450EW	450.0	± 7.5	± 15.0	40	3.0	6.0	1500	$-20 \sim +80^\circ\text{C}$
LT450FW	450.0	± 6.0	± 12.5	40	3.0	6.0	2000	$-20 \sim +80^\circ\text{C}$
LT450GW	450.0	± 4.5	± 10.0	40	2.0	6.0	2000	$-20 \sim +80^\circ\text{C}$
LT450HW	450.0	± 3.0	± 9.0	40	2.0	6.0	2000	$-20 \sim +80^\circ\text{C}$
LT450IW	450.0	± 2.0	± 7.5	40	2.0	6.0	2000	$-20 \sim +80^\circ\text{C}$
LT450HTW	450.0	± 3.0	± 9	60	2.0	6.0	2000	$-20 \sim +80^\circ\text{C}$
LT450ITW	450.0	± 2.0	± 7.5	60	2.0	6.0	2000	$-20 \sim +80^\circ\text{C}$
LT455BW	455.0	± 15.0	± 30.0	40	3.0	4.0	1500	$-20 \sim +80^\circ\text{C}$
LT455CW	455.0	± 12.5	± 24.0	40	3.0	4.0	1500	$-20 \sim +80^\circ\text{C}$
LT455DW	455.0	± 10.0	± 20.0	40	3.0	4.0	1500	$-20 \sim +80^\circ\text{C}$
LT455EW	455.0	± 7.5	± 15.0	40	3.0	6.0	1500	$-20 \sim +80^\circ\text{C}$
LT455FW	455.0	± 6.0	± 12.5	40	3.0	6.0	2000	$-20 \sim +80^\circ\text{C}$
LT455GW	455.0	± 4.5	± 10.0	40	2.0	6.0	2000	$-20 \sim +80^\circ\text{C}$
LT455HW	455.0	± 3.0	± 9.0	40	2.0	6.0	2000	$-20 \sim +80^\circ\text{C}$
LT455IW	455.0	± 2.0	± 7.5	40	2.0	6.0	2000	$-20 \sim +80^\circ\text{C}$
LT455HTW	455.0	± 3.0	± 9	60	2.0	6.0	2000	$-20 \sim +80^\circ\text{C}$
LT455ITW	455.0	± 2.0	± 7.5	60	2.0	6.0	2000	$-20 \sim +80^\circ\text{C}$

○ All specification subject change without notice. 规格变化, 恕不另行通知。

★ DIMENSIONS (Unit: mm) 外形尺寸

★ TEST CIRCUIT 测试线路
